

CLEAN YOUR WOOD

Surface preparation, especially on older, weathered wood, is critical for a beautiful, long lasting finish. Even new wood needs to be cleaned to remove dirt and contaminants.

Cleaning the wood before staining allows for:

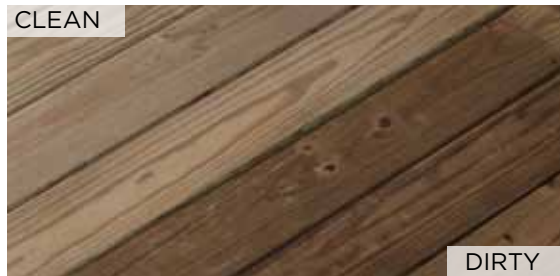
- Maximum adhesion of the finish
- Removal of dirt and contaminants
- Better stain penetration for maximum durability
- Uniformity of the finish across the wood surface

Olympic® Premium Deck Cleaner can be used to deep clean decks, fences, siding and shakes, along with concrete, brick, stucco and composites. Unlike bleach, Deck Cleaner will penetrate into the wood and lift the dirt to the surface to be rinsed away. It will clean stains caused by mildew, dirt, algae and mold. (*Olympic Deck Brightener* is a more gentle cleaner designed to clean cedar and redwood.)

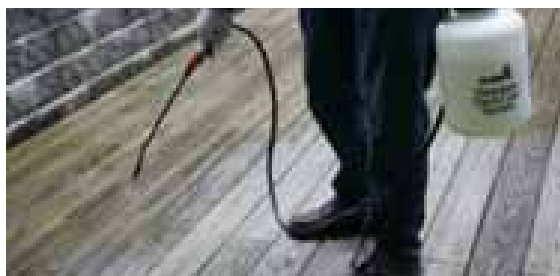
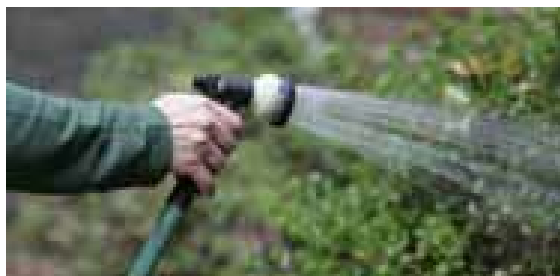
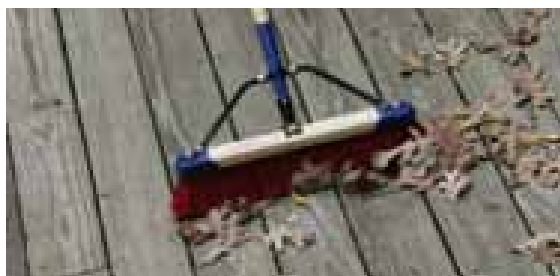
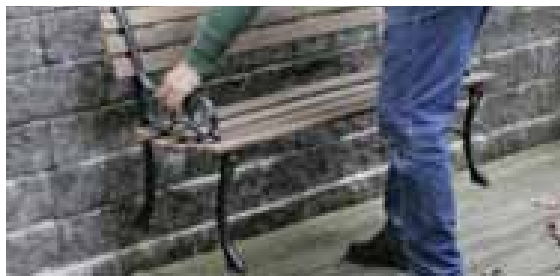
If you are staining or sealing a previously coated surface, you must first remove the old, unwanted finish that may lead to poor adhesion.

1. Start by repairing any structural damage. Fix damaged boards and posts and replace or add new screws and nails.
2. Remove all furniture and household items from the area and cover any delicate vegetation and surrounding areas to avoid damage.
3. Remove dirt and debris from the wood surface with a push broom.
4. Spray all surrounding plants and vegetation liberally with water before and after application.
5. Test a small area, rinse and allow to dry before application.
6. If cleaning new wood, grade marks and mill glaze need to be sanded.
7. Apply *Olympic Deck Cleaner* at full strength with a pump style garden sprayer.
8. Apply liberally and allow to stand for 5 to 10 minutes.

CLEAN



DIRTY



CLEAN YOUR WOOD

9. Scrubbing is not typically required, but may be necessary for tough stain areas and algae stains.
10. Thoroughly rinse with water and ensure that all cleaner is removed. Any residual cleaner on the surface, may inhibit stain penetration.
11. A second application may be applied if necessary.
12. Allow 24 hours for the wood to dry.
13. Once the wood is completely dry, lightly sand the surface with 120 to 150 grit sandpaper. Sand with the grain and make sure all sanding dust is removed prior to stain application. Sanding will expose a fresh, durable surface that is ready to accept a stain or sealant.

These How-To instructions are provided for informational purposes only. The information contained in *Olympic* How-To videos and instructions is intended to provide guidance to do-it-yourself projects. *Olympic* assumes no responsibility for the accuracy of the information herein and disclaims any liability for omissions, errors or the outcome of any project. The viewer/reader must always use proper safety precautions and exercise caution when taking on any project. If there is any question or doubt in regards to any element of a project, please consult with a licensed professional. Please read and observe all the warnings and precautionary information on the product labels. Material Safety Data Sheets are available through our retailer, web site, or by calling 1-800-426-6306.